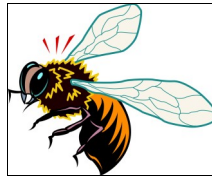


UNION



BUG

A Newsletter of the Beaver-Lawrence Counties Central Labor Council

VOLUME 4 ISSUE 11

JULY 2018

LABOR COUNCIL OFFICERS

- **President:**
Richard Galiano
- **Ex. Vice President:**
Dan Onuska
- **Recording Secretary:**
Lisa Alexander
- **Secretary-Treasurer:**
Eric Martin
- **Vice Presidents:**
 - John Howard Thompson
 - Bernie Hall
 - Linwood Alford
 - Mark Benkart
 - Kerri Theuerl
- **Trustees:**
 - Jan Carpenter
 - Laurie Fisher
 - Rev. Kevin Lee
 - Jody Kohser
 - Alicia Craig
 - Sara Dudash
 - Tom Flook

2018 Midterm Election Will Be A Key To Determining Effect Of Janus Decision

by Michael Cicconi
Legislative Chair, IAMAW
Local 1976

Do all working people need to take heed of the U.S. Supreme Court's *Janus v. AFSCME Council 31* decision on June 27th forbidding public sector unions from requiring non-members to pay fair share fees? In a word, yes.

Some of us who are not public sector employees and who do not belong to a public sector union may be wondering why. Well, as the saying goes, "An injury to one is an injury to all." It is widely believed that this decision delivered a hard blow to one sector of organized labor, but ultimately the decision will weaken the Labor Movement as a whole.

The *Janus* case was the third case in five years brought before the Supreme Court to challenge the validity of fair share fees by

overturning *Abood v. Detroit Board of Ed.* By unanimous decision 40 years ago, *Abood* found that workers who receive the representation and benefits of a union contract should have to pay dues equal to the administrative costs of that contract. That seems fair, so why change it?

Essentially, *Janus* is the equivalent of making the public sector right-to-work (RTW). Given what we know about RTW – lower wages, fewer benefits and more dangerous workplaces – this cannot be good for the 20.2 million U.S. workers employed in the public sector. As employment practices and standards spill over into the private sector, it will negatively impact the rest of us, as well.

If you google the largest unions in the U.S., the top three are NEA, SEIU and AF-

SCME. These are all public sector unions. Clearly they aimed for the largest target and scored a hit. But who are "they?" Would it surprise you to know that the people who financed *Janus* and the other law suits negatively impacting workers' rights are among the wealthiest in the country? Through various foundations, people like the Koch brothers and the Walton family paid the legal fees. The Scalf Family Foundations, headquartered in Pittsburgh, were large contributors as well. The common thread: they are all linked to big business.

In 1945, when union density was at 33.4%, the wealthiest

Continued on page 4

**I'M STICKING WITH
THE UNION** 

AFL-CIO

Community Services Report

By Mark Benkart
Community Services Chairman

The 2008 Community Services Institute was held at the Crowne Plaza in South Hills Pittsburgh starting on July 11th. It was nice to see some old friends, several of whom I have known for years.

Pennsylvania AFL-President Rick Bloomingdale convened the first general session and discussed the importance of supporting our candidates in the November elections. Rick introduced Darrin Kelly, the new president of the Allegheny County Labor Council.

Father Jack O'Malley, the Labor Priest, gave the invocation.

Bob Nelkin, the new CEO of Southwest Pa United Way, pointed out that the economy is doing well and unemployment is down, but the middle class and working poor are not benefitting from this success.

The night ended with a nice reception out on the Patio.

I will give an additional report on the Institute in next month's UNION BUG.



Father Jack O'Malley giving invocation on July 11th at Pennsylvania AFL-CIO Community Services Institute.

UNION BUG

Published Monthly

An official publication of the
Beaver/Lawrence Central Labor Council

P.O. Box A, Beaver, PA 15009

Editor - Victor Colonna
v.colonna@comcast.net

Asst. Editor - Steven Kocherzat
steven6700@comcast.net

NEWSPAPER COMMITTEE

Bernie Hall

CALENDAR OF EVENTS COMMITTEE

Jody Kohser
Mark Benkart

DIRECTOR OF PHOTOGRAPHY

T Berry



The opinions expressed in Union Bug articles are those of the author and not necessarily those of the Beaver-Lawrence Central Labor Council or its officers.

President's Report

By Rick Galiano
Labor Council President

* The Pennsylvania AFL-CIO Executive Council has completed its endorsements of candidates running in the November General Election. The endorsement process was completed at a meeting of the Executive Council on June 14th. Endorsements have been made in the Pennsylvania gubernatorial race, Pennsylvania U.S. Senate and House of Representatives races and Pennsylvania House of Representative races. Endorsements were given to candidates receiving an affirmative vote of at least two-thirds. Endorsements for offices representing Beaver and Lawrence Counties are as follows:

Governor:
Tom Wolff (D)

U.S. Senate:
Bob Casey (D)

U.S. Congress:
16th District - Ronald DiNicola (D)
17th District - Conor J. Lamb (D.)

Pa. House of Reps:
9th District - Chris Sainato (D.)
15th District - Terri Mitko (D.)
16th District - Robert Matzie (D.)

* Congratulations to the 2018 winners of the two \$1,000 scholarships offered each year by the Labor Council. The scholarships are offered each year to high school seniors residing in the home of a good standing member of a local union affiliated with the Beaver-Lawrence Central Labor Council. Bryant Niederriter is the winner of the Bea-

ver-Lawrence Central Labor Council Scholarship and Audra Kozlowski is the winner of the Donald McNutt Scholarship. Bryant's father, Eric, is a member of Boilermakers Local 154. Bryant is a graduate of West Forest High School and will attend Penn State Behrend. Audra's father, Brian, is a member of Sheet Metal Workers Local 12. Audra is a graduate of Bethel Park High School and will attend Clarion University.

* Thank you to all who helped make the Labor Council's annual picnic meeting at Brady's Run Park on June 18th a well-attended success. An America Needs Jobs Roundtable with Congressman Conor Lamb was included as part of the meeting and picnic.



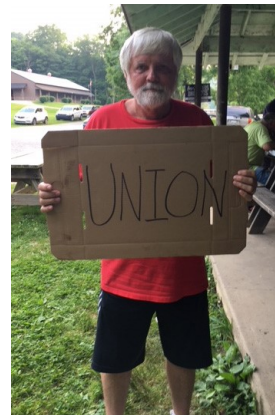
U.S. Rep. Conor Lamb (back row, center), with Labor Council delegates at picnic.



Right: Terri Mitko, state AFL-CIO endorsed candidate for the Pa. House 15th District seat, speaking with Labor Council President Rick Galiano at picnic.



Left: Maria Scifo, SEIU Healthcare Pa., addressing U.S. Rep. Conor Lamb at America Needs Jobs Roundtable held at the Labor Council picnic on June 18th. Maria is a former student nursing assistant at UPMC who was denied fulltime employment for union support. Shawn Walthour, SEIU Local 668, who works in the Allegheny County Assistance Office and Francis Adams (UHWP), a homecare worker, TRIPL, also addressed Rep. Lamb.



Right: Dennis Rousseau, UBC retired, at picnic.

Midterm Key to Janus Effect

Continued from page 1

10% of the population earned less than one-third of income dollars. In 2015, when union density was at 11.1%, nearly half (47.8%) the earned income went to the top 10%, the highest levels since that data has been recorded. In 2017, union density fell to 10.7 percent. Stats haven't been published yet, but I have no doubt the top 10% is now enjoying more than half the income earned in this country.

Greed is a powerful motivator. When the richest people in America fund the hardest hit to working people in decades, it doesn't matter which sector we work in, we all feel blow. But we can punch back. Maybe we can't change the court ruling, but we can elect politicians that will pass worker-friendly laws. We can encourage union participation and membership among our family and friends and we can stick together.

The *Janus* decision opens the door to national RTW and other assaults on collective bargaining. The 2018 mid-term elections will be key in determining which way the pendulum swings. Will it continue towards corporate interests or will it begin to flow back in favor of working people? Our votes will decide. I hope everyone is registered to vote and will vote in workers' best interest. November is fast approaching.

Below is a sample of the responses issued by labor leaders immediately after the *Janus* decision was announced:

AFL-CIO President Richard Trumka:

The Supreme Court's 5-4

decision in *Janus v. AFSCME, Council 31*, abandons decades of commonsense precedent. In this case, a bare majority of the court, over the vigorous dissent of four justices, has conceded to the dark web of corporations and wealth donors who wish to take away the freedoms of working people. Until it is overturned, this decision will be a political stain on what is intended to be the most honorable, independent body in the world. But more importantly, it will further empower the corporate elites in their efforts to thwart the aspirations of millions of working people standing together for a better life.

But here's the thing: America is heading in a different direction. All over the country, workers are organizing and taking collective action as we haven't seen in years. More than 14,000 workers recently formed or joined unions in just a single week. This followed a year where 262,000 workers organized and the approval rating of unions reached a nearly 14-year high. Working families know the best way to get a raise, better benefits and a voice on the job is through a union contract. The corporate narrative of the labor movement's downfall is being dismantled by working people every single day.

We have never depended on any politician or judge to decide our fate and we aren't about to start now.

AFSCME President Lee Saunders:

Unions will always be the most effective force and vehicle to propel working people into the middle class. Despite this unprecendented and nefarious political

attack – designed to further rig the rules against working people – nothing changes the fact that America needs unions now more than ever. We are more resolved than ever to fight like hell to win for our members and the communities they care so much about. AFSCME members don't do this work to get rich. They do it because it's a calling – and for that service, they deserve respect. They deserve the same freedoms as the CEOs and billionaires who continue to rig the rules against everyone else. The American labor movement lives on, and we're going to be there every day, fighting hard for all working people, our freedoms and for our country.

IBEW International President Lonnie R. Stephenson:

The Supreme Court's decision in the *Janus v. AFSCME* case is nothing but an all-out assault on the basic freedom of working people to come together to better their lives and their communities.

This is not just an attack on public-sector workers. It is an attack on every single American who works for a living, and it is only the first step in an effort to repeal every right won by working people in this country.

But while the Supreme Court may attack our rights, it can never stop a movement whose time has come. Across this country, workers are standing up and joining unions in higher numbers than we have seen in many years and the IBEW, along with the entire labor movement, will never stop fighting for the basic dignity and welfare of working America.

BEAVER/LAWRENCE
CENTRAL LABOR
COUNCIL



We're on the Web:
pa.aflcio.org/349

Calendar of Events

- 07/11 Pa. AFL-CIO Community Services Institute: Crown Plaza
to
07/14 Hotel Pittsburgh South, 164 Fort Couch Road, Pittsburgh,
PA 15241.
- 07/16 Beaver-Lawrence Central Labor Council Executive Board
and membership meetings: Executive Board - 6:00 PM;
Membership – 7:30 PM; IBEW 712, Vanport.
- 08/17 Pa. AFL-CIO annual COPE Institute: Conference Center;
to
08/19 Shippensburg University, 500 Newburg Road,
Shippensburg, PA 17257.
- 08/18 USW District 10 Benefit Run: Run begins at 10:30 at
District 10 office. See flyer attached end of this issue of
the UNION BUG for additional details.
- 08/20 Beaver-Lawrence Central Labor Council Executive Board
and membership meetings: Executive Board - 6:00 PM;
Membership – 7:30 PM; PSEA Bldg.; New Castle

In Brief



Left: Labor Council
Vice-President
Mark Benkart with
U.S. Rep. Conor
Lamb at Midland
Fourth of July
celebration in
Midland.

Right: Ivey Roach,
IBEW Local 29,
and UNION BUG
Director of Photog-
raphy T Berry,
IBEW Local 201, at
Midland Fourth of
July celebration in
Midland.



Calendar of Events submissions must be emailed to
Jody Kohser, Calendar of Events Coordinator, at
jkohser@verizon.net, by 6:00 p.m. on August 10th
to be considered for publication in the
August 2018 Issue of the **UNION BUG**.

5th ANNUAL



UNITED STEELWORKERS
USW
DISTRICT 10

BENEFIT RUN

Saturday, August 18th, 2018

BENEFITTING

 **march of dimes**
ride for babies

All Rides Welcome

In the western side of PA

Run begins at 10:30 at the District 10 office

Registration begins at 9:00 or to preregister call

Rick Benson at the District office at 412-824-8140
or @724-448-5467

There is a group of riders coming from the
eastern half of PA

Call or text Corey Ingram at @717-654-2428 to
pre-register and get the details to meet with them.

The west and east will meet in Altoona & ride
together to Linden Hall for a dinner,
refreshments and drawings for prizes.

The ride is \$20/person which includes dinner
after the run. All riders get an event T-shirt.



You can reserve a room at Linden
Hall at the Steelworker's rate.

Please call
Linden Hall

@724-529-7543

**Linden
Hall** 

