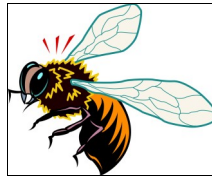


# UNION



# BUG

A Newsletter of the Beaver-Lawrence Counties Central Labor Council

VOLUME 5 ISSUE 7

MARCH 2019

## LABOR COUNCIL OFFICERS

- **President:**  
Richard Galiano  
USW 9305
- **Ex. Vice President:**  
Dan Onuska  
IBEW 29
- **Recording Secretary:**  
Lisa Alexander  
AFSCME 2902
- **Secretary-Treasurer:**  
Eric Martin  
IUOE 95
- **Vice Presidents:**
  - John Howard Thompson  
AFSCME 2902
  - Bernie Hall  
USW 8183
  - Linwood Alford  
LIUNA 833
  - Mark Benkart  
IBEW 29
  - Kerri Theuerl  
SEIU HCPA
- **Trustees:**
  - Jan Carpenter  
SEIU 668
  - Laurie Fisher  
AFSCME 2902
  - Rev. Kevin Lee  
IBEW 29
  - Jody Kohser  
SEIU 668
  - Alicia Craig  
AFSCME 2902
  - Sara Dudash  
SEIU 668
  - Tom Flook  
IUPAT 530

## COPE Fundraiser Proceeds To Support Labor Council Endorsed Candidates In Primary Election

By Mark Benkart  
Labor Council  
Vice-President

The Beaver-Lawrence Central Labor Council (CLC) will host a Committee on Political Education (COPE) fundraiser on Thursday, April 11th. The proceeds will be used primarily to support Labor Council endorsed candidates in the May 21st Primary Election.

Candidate endorsements will be made at the March 18th Labor Council meeting [Ed. Note: see February 2019 UNION BUG, Page 1].

The April 11th fundraiser will be a Beer and Wing Night at Robert's Roadside Inn in Bridgewater. The Labor Council hosted a highly successful COPE Beer and Wing Night fundraiser at Robert's prior to the November 2018 General Election and is hoping to achieve an even better result this spring.

The Beer and

Wing Night will begin at 6:00 PM with an open bar for beer and soft drinks that will continue until 8:00 PM. After that, it will be a cash bar. The buffet that Robert's will provide is much more than wings. There will be rotisserie chicken, French fries, and macaroni salad.

We would like to have a Chinese Auction. If someone would like to donate a basket, please let us know.

Your attendance at the Beer and Wing Night is a way to make a statement that you support the Labor Council's primary election agenda. Endorsed candidates attending the Beer and Wing Night will be introduced to the attendees and encouraged to distribute their campaign literature.

An invitation to the fundraiser, reservation

form and event flyer have been mailed to the Labor Council's member unions and supporters on its mailing list. The reservation form appears at the end of this issue of the UNION BUG.

It is important that you RSVP because Robert's needs a count to know how much food to prepare. Please mail the reservation form to the United Way of Lawrence County, 223 Mercer Street, New Castle, Pa 16101. Please make your check payable to "Beaver-Lawrence CLC COPE Fund."

Please distribute the reservation form and event flyer as widely as possible. If you have any questions, please contact Mark Benkart at [benkart-house100@comcast.net](mailto:benkart-house100@comcast.net) or 724-312-4387. See you on April 11th.

Beaver-Lawrence Counties Central Labor Council

### COPE Beer & Wing Night

Thursday, April 11th 6:00 - 8:00 PM

Robert's Roadside Inn, Bridgewater

# President's Report

By Rick Galiano  
Labor Council President

\* Labor Council primary election endorsements will be decided at the March membership meeting. See the first page articles of the January and February issues of the UNION BUG for additional information. The Executive Board encourages all delegates to participate in this important Council function.

\* The Labor Council has endorsed the candidacy of Labor Council Executive Vice-President Dan Onuska for Midland Borough Council. The endorsement was made at the February membership meeting. The Labor Council encourages its delegates and all union members in Midland to support Dan's candidacy.

\* AFSCME Local 2902 sponsored the food and refreshments at the February Labor Council meeting. The food and refreshments at the March meeting will be sponsored by Dan Bosh. Sponsors are still needed for the May and November meetings. Please contact me if you, your local union, or organization would like to sponsor

a meeting.

\* The next Northwest Pa. Area Labor Federation meeting will be held on March 27<sup>th</sup>. Please contact me if you would like to attend the meeting or would like any matter raised at the meeting.

\* Thank you to Mike Johnson, Pa. AFL-CIO Data Director, and Rosann Barker, Northwestern Pa. Area Labor Federation Staff Director, for attending the March Labor Council meeting.

\* The Executive Board encourages all Labor Council delegates to join a Labor Council committee. Below is a list of the Labor Council's standing committees, their members and contact numbers:

### Community Services Committee:

Mark Benkart	724-312-4387
Lisa Alexander	724-971-7473
Sara Dudash	724-730-7402
Laurie Fisher	724-730-2789
Kerri Theuerl	724-544-4599
Howard Thompson	724-333-2978

(Continued on page 4)

## UNION BUG

*Published Monthly*

An official publication of the  
Beaver/Lawrence Central Labor Council

P.O. Box A, Beaver, PA 15009

Editor - Victor Colonna  
v.colonna@comcast.net

Asst. Editor - Steven Kocherzat  
steven6700@comcast.net

### NEWSPAPER COMMITTEE

Bernie Hall

### CALENDAR OF EVENTS COMMITTEE

Jody Kohser  
Mark Benkart

### DIRECTOR OF PHOTOGRAPHY

T Berry



The opinions expressed in Union Bug articles are those of the author and not necessarily those of the Beaver-Lawrence Central Labor Council or its officers.

## Stand In Support Of UE Locals 506 And 618

By Eric J. Martin  
Beaver-Lawrence Central Labor  
Council Treasurer  
IUOE Local 95

My wife and I had the privilege on March 2<sup>nd</sup> to stand in support of the members of United Electrical Workers (UE) Local 506 and 618 who are on strike against Wabtec, formerly General Electric, in Lawrence Park near the City of Erie.

Or should I say the honor. Both of us, being originally from the area, could not simply stand by while observing what is happening to those 1700 members, some of whom are personal friends and relatives.

I can tell you this - the resolve of those Brothers and Sisters in solidarity is a standard that we all should hope to achieve. It was so refreshing, if I may use that term, to see the strength in the membership, especially when there is so much division within so many other Local Union rank-and-file in this violent political climate.

We had the opportunity to sit down with UE International Representative John Thompson [Ed.note: raised in Conway and a graduate of Freedom Area High School] as well as Local 506 Business Agent Mike Ferritto and Lawrence Park facility Chief Plant Steward Leo Grzegorzewski. It was awesome how they took the time to meet with us and to have a conversation in which they explained what was happening and how the propaganda against the union was being played out with the local media.

The strike began on February 26<sup>th</sup> when contract negotia-

tions broke down over Wabtec's insistence that a sixty day interim agreement include mandatory overtime. Wabtec completed its

*The members of Local 506 and Local 618 are striking to maintain current wages, which Wabtec wants to slash by almost half for recalled employees and new hires, introducing a two tiered or compression type pay scale.*

purchase of GE's Transportation Division on February 25<sup>th</sup>. Wabtec wanted nothing to do with the contract that both GE and the UE had considered acceptable and profitable for all for more than 80 years .

The members of Local 506 and Local 618 are striking to maintain current wages, which Wabtec wants to slash by almost half for recalled employees and new hires, introducing a two tiered or compression type pay scale.

Wabtec also wants to change working conditions and combine job codes in the plant which would introduce employees to a greater risk factor by blurring specialty job parameter lines. One example would be that you could be working IT one day then operating a crane the next.

Wabtec has asserted and put in print that the wages paid

to the current employees are generous and too high. This is an insult not only to the employees, but every person living in Erie County. This is not just about the jobs, it is about the future of the local economy and community, and family sustaining jobs across America.

Wabtec's Lawrence Park plant, under the current collective bargaining agreement has been highly profitable every quarter for years. Wabtec in and of itself is a profitable company that is expected to bring in nearly \$8 billion this year, doubling its revenue as a result of the GE railroad division acquisition.

There was enough money to provide over \$120 million in payments to executives at Wabtec and GE, including a \$16 million handout to Wabtec's CEO. It would seem to me that they do not possess a clear understanding of what the words "generous" and "too high" really mean.

A lot is at stake here, not just with the apparent union busting at the Lawrence Park plant. There is a tradition here. Many of these workers are third generation. Their family history is rooted with the plant from their grandparents to their parents, and now themselves. Children literally play in the backyards as they watch their fathers cross the street to go to work.

This is a fight for the future generations to come. I would hope that we can all learn and become more productive members within our own locals because of the examples set by our Brothers and Sisters of the

(Continued on page 6)

## PA AFL-CIO: WHAT YOU CAN DO TO HELP STRIKING UE MEMBERS IN ERIE

*Reprinted from March 1<sup>st</sup> issue of PA AFL-CIO newsletter*

... These Erie workers are standing up for family sustaining jobs and their communities. Wabtec has taken control of the company and wants to impose working conditions that do no more than line the bosses' pockets. And they intend to do it by turning workers against one another. They WILL NOT win.

UE members know the two-tier wage system is about pitting workers that do the same jobs against their fellow brothers and sisters. This wage structure would pay new workers 38% LESS than their fellow workers. The company is also seeking MANDATORY overtime.

The proposed wage reductions would result in a loss in direct and induced wages of \$17.1 million, 82 more local jobs, and a ripple effect of \$11 million in economic loss to the community. Meanwhile, CEO Raymond Betler will receive a \$16 million payment on the completion of the merger, along with \$43 million in compensation for 19 other corporate executives.

### Here's what you can do:

1. You can refuse to cross the picket line for deliveries of any kind.
2. Join them at the picket line at one of the gates, make sure to wear your union-colors, please.

3. Bring or send a donation of food for those on the picket line.

4. Post on your social media sites comments of support, pictures of your members showing support, and flood the internet with this hashtag:

#SOLIDARITY4UE (You can take a picture at your location with handmade signs of support to post on social media, too.)

5. Call your legislators and ask them to use their influ-

ence to bring negotiations to a quick and fair contract.

6. Spread the word and use your influence to help garner more support especially from other unions and community leaders.

Thank you in advance for all that you do! SEE YOU ON THE PICKET LINE!

## President's Report

Continued from page 2

### COPE & Legislative Committee:

Laurie Fisher	724-730-2789
Bernie Hall	724-777-1021
Rick Galiano	724-759-8870
Kerri Theuerl	724-544-4599
Howard Thompson	724-333-2978

### Education Committee:

Rick Galiano	724-759-8870
--------------	--------------

### Scholarship Committee:

Sara Dudash	724-730-7402
-------------	--------------

### Union Label Committee:

Dan Nunzir	724-601-1768
------------	--------------

### Civil Rights & Economic Opportunity Committee:

Linwood Alford	724-630-6800
----------------	--------------

### Constitution and By-Laws Committee:

Lisa Alexander	724-971-7473
Rick Galiano	724-759-8870
Jody Kohser	724-777-8463
Larry Nelson	412-974-7317

### Union Bug/Newsletter Committee:

Lisa Alexander	724-971-7473
Bernie Hall	724-777-1021

# Labor Under Attack in PA Legislature

By Mike Cicconi and Jeff Miller  
I.A.M.A.W. L.L. 1976  
LEGISLATIVE COMMITTEE

The foes of the Labor Movement are hard at work in the halls of our State Government in Harrisburg, Pennsylvania. After years of trying and failing to pass legislation that would severely weaken Pennsylvania's Prevailing Wage Laws and attempts at creating a Right to Work state here, members of Pennsylvania's legislature are still attempting to weaken these laws. When they are done with public sector unions, they will come after private sector unions as well.

What is Prevailing Wage and why does it matter to me? Pennsylvania's Prevailing Wage Law dates to 1961, enacted to protect commonwealth workers from out-of-state competition. It applies to all government-financed projects of \$25,000.00 or more. This means that union scale wages and benefits are required for projects at schools, municipalities, state owned properties and roads across the state. This higher pay does increase the cost of the work for some of these projects, but this cost is then recovered locally and statewide with income and sales taxes. Well paid unionized Pennsylvania workers earn more and buy more products and services.

There are approximately 23 states with Right to Work and no Prevailing Wage laws. In South Carolina, only 3% of their state and local workers (public sector) are unionized. Also in South Carolina, Boeing workers (private sector) were convinced to reject a union (IAM) and earn

about \$8.00 less an hour than a comparable worker at the Boeing plant in Everett, Washington. Lower pay equals less income and school taxes collected. As a result, a study ranking states by the quality of their public schools

*After years of trying and failing to pass legislation that would severely weaken Pennsylvania's Prevailing Wage Laws and attempts at creating a Right to Work state here, members of Pennsylvania's legislature are still attempting to weaken these laws.*

showed that South Carolina ranked 40<sup>th</sup> overall. Do you want this for Pennsylvania or neighboring states?

Need examples of proposed legislation that will weaken Pennsylvania's labor laws? Visit [www.legis.state.pa.us](http://www.legis.state.pa.us), search under Labor and Industry. Then contact your legislator! Be sure to tell them at the beginning and end of your conversation or correspondence that you are a union member.

The General Assembly members representing Beaver and Lawrence Counties are:

## PA State Senators

### **Camera Bartolotta R-46**

135 Technology Dr. Suite 202  
Canonsburg, PA 15317  
(724) 746-3762

### **Elder Vogel Jr. R-47**

488 Adams Street  
Rochester, PA 15074  
(724) 774-0444

## PA State Representatives

### **Aaron Bernstine R-10**

438 Line Ave.  
Ellwood City, PA 16117  
(724) 752-2120

### **Jason Orititay R-46**

300 Old Pond Road  
Bridgeville, PA 15017  
(412) 221-5110

### **Joshua Kail R-15**

3468 Brodhead Road Suite 9  
Monaca, PA 15061  
(724) 728-7655

### **Christopher Sainato D-9**

20 South Mercer Street  
Z-Penn Bldg.  
New Castle, PA 16101  
(724) 656-1112

### **Jim Marshall R-14**

2811 Darlington Road Suite 1  
Beaver Falls, PA 15010  
(724) 847-1352

### **Parke Wentling R-17**

395 High St. #105 P.O. Box 17  
Conneaut Lake, PA 16316  
(814) 382-7200

### **Rep. Robert F. Matzie D-16**

1240 Merchant St., 1<sup>st</sup> Fl.  
Ambridge, PA 15003  
(724) 266-7774

# Support UE

(Continued from page 3)

UE Locals 506 and 618. They have made me even more proud to be UNION.

*[Editor's note: UE Locals 506 and 618 announced on March 7<sup>th</sup> that they have reached an agreement with Wabtec to end the strike. The agreement will remain in effect for ninety days and will allow for the continuation for a long-term collective bargaining agreement.]*

On March 6<sup>th</sup>, the day before the strike settlement agreement was signed, the UE held a solidarity rally at Wabtec's Wilmerding headquarters as part of an International Day of Action Against Wabtec's Corporate Greed.

Representatives of many unions and community organizations attended the rally, including PA AFL-CIO Secretary-Treasurer Frank Snyder, Northwestern Pa. AFL-CIO Area Labor Federation

Staff Director Rosann Barker, Beaver-Lawrence Central Labor Council Vice-President Mark Benkart and Trustee Jan Carpenter, and representatives of several local unions affiliated with the Beaver-Lawrence Central Labor Council.



March 6<sup>th</sup> Solidarity Rally in front of Wabtec's headquarters in Wilmerding. From left, Donald Slabe, IUPAT Local 6 member; Frank Snyder, Pa AFL-CIO Secretary-Treasurer; Peter Knowlton, UE General President; and Jan Carpenter, Beaver-Lawrence Central Labor Council Trustee. Secretary-Treasurer Snyder's remarks to the rally participants focused on the need for Labor Movement solidarity with the members of UE Locals 506 and 618. General President Knowlton emphasized in his speech to the rally participants that the UE will not give up the benefits attained under previous contracts with GE.

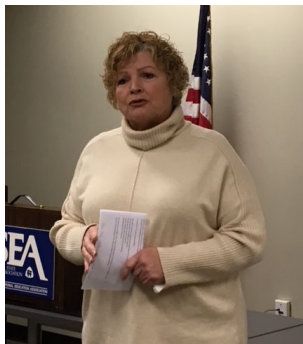


IUPAT District 57 at the March 6<sup>th</sup> Solidarity Rally in support of striking UE members. From left, Giles Grinko, Local 479 Business Representative; Joe Hughes, Local 751 Organizer; Donald Slabe, Local 6 member.



Pa. State Representative Summer Lee (D-34<sup>th</sup> District) addressing rally participants. Rep. Lee called for political leaders to support the striking members of UE Locals 506 and 618.

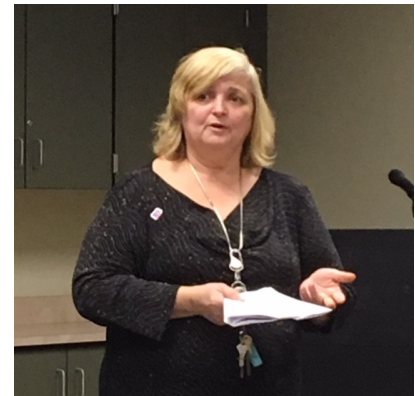
## February Labor Council Meeting Guests



Loretta Spielvogel, candidate for Lawrence County Democratic Party County Commissioner nomination, addressing February Labor Council meeting. Loretta is a retired New Castle police officer. She was hired in 1985 and retired 22 years later as Lieutenant of the Juvenile Bureau. She was the first female New Castle police officer promoted to Lieutenant. She is a member of Fraternal Order of Police Lodge 21.



Mike Johnson, Pa. AFL-CIO Data Director, reporting that organizing is the biggest goal of the State AFL-CIO in 2019. The State AFL-CIO has begun holding organizing roundtable discussions in Harrisburg. The next roundtable will be held on March 29<sup>th</sup>. Every AFL-CIO member is invited to participate.



Rosann Barker, Northwestern Pa. Area Labor Federation (NWF) Staff Director reporting to delegates at February Labor Council meeting. Rosanne distributed two NWF pamphlets: "Structure, Activities and Events of Central Labor Councils - A Guide to How Central Labor Councils of the AFL-CIO Operate" and "2019 Legislative Directory of the Northwestern Pennsylvania Area Labor Federation, AFL-CIO."

BEAVER/LAWRENCE  
CENTRAL LABOR  
COUNCIL



We're on the Web:  
[pa.aficio.org/349](http://pa.aficio.org/349)

## Calendar of Events

- 03/12 Community Services/Moral Monday meeting; 7:00 PM; IBEW 712 Edwin D. Hill Complex, Vanport.
- 03/16 Beaver-Lawrence Central Labor Council Executive Board Primary Election candidate interviews; 9:00 AM, IBEW 712 Edwin D. Hill Complex, Vanport (see article on Page 1 of February issue of the UNION BUG for additional details).
- 03/18 Beaver-Lawrence Central Labor Council Executive Board and membership meetings; Executive Board - 6:00 PM; Membership – 7:30 PM; IBEW 712 Edwin D. Hill Complex, Vanport. (see President's Report on Page 3 of this issue of the UNION BUG for additional details).
- 03/22 "Strategies for a New Labor Landscape – Strengthening Member Commitment;" convened by the Labor School at Penn State and the Allegheny-Fayette CLC: 10:00 AM – 4:00 PM, Pittsburgh Federation of Teachers, 10 S. 19<sup>th</sup> St., Pittsburgh, Pa 15203. Questions: Mary Bellman, Director of Labor Education – 814-867-5697.
- 03/27 Northwest Pa. Area Labor Federation meeting; Executive Board meeting – 6:00; delegates' meeting – 7:00 PM; AFSCME DC 85 Hall, Franklin, PA; 1<sup>st</sup> floor meeting room.
- 04/11 Beaver-Lawrence Central Labor Council Beer and Wing Night; benefits COPE fund: 6:00 – 8:00 PM; Robert's Roadside Inn, Bridgewater (see article on Page One of this issue of the UNION BUG for details).
- 04/15 Beaver-Lawrence Central Labor Council Executive Board and membership meetings: Executive Board - 6:00 PM; Membership – 7:30 PM; IBEW 712 Edwin D. Hill Complex, Vanport.

Calendar of Events submissions must be emailed to Jody Kohser, Calendar of Events Coordinator, at [jkohser@verizon.net](mailto:jkohser@verizon.net), by 6:00 p.m. on April 8<sup>th</sup> to be considered for publication in the April 2019 Issue of the **UNION BUG**.

**Beaver-Lawrence CLC is hosting:**

**Beer and Wings Night**

**(and more)**

**Robert's Roadside**

**1020 Sharon Road, Beaver, PA 15009**

**Thursday, April 11<sup>th</sup>, 2019**

**Open Bar from 6:00 pm to 8:00 pm (Beer & Soft Drinks)**

**Buffet included.**

**\$25.00 per person**

**Each person will be hand stamped when entering.**

**Please make checks payable to the Beaver-Lawrence CLC/Cope Fund.**

**All proceeds will benefit the Beaver-Lawrence CLC Cope Fund.**

**RSVP by 4/4/2019**

**Any questions or additional tickets you can contact Mark Benkart at  
724-312-4387.**

---

**Name of Organization \_\_\_\_\_**

**Contact Number \_\_\_\_\_**

**Number Attending \_\_\_\_\_**

**Will be donating a basket for Chinese Auction-Yes \_\_\_ No \_\_\_**

**Mail to: United Way of Lawrence County**

**223 N. Mercer Street, New Castle, PA 16101**

**Attn: Sara Dudash**